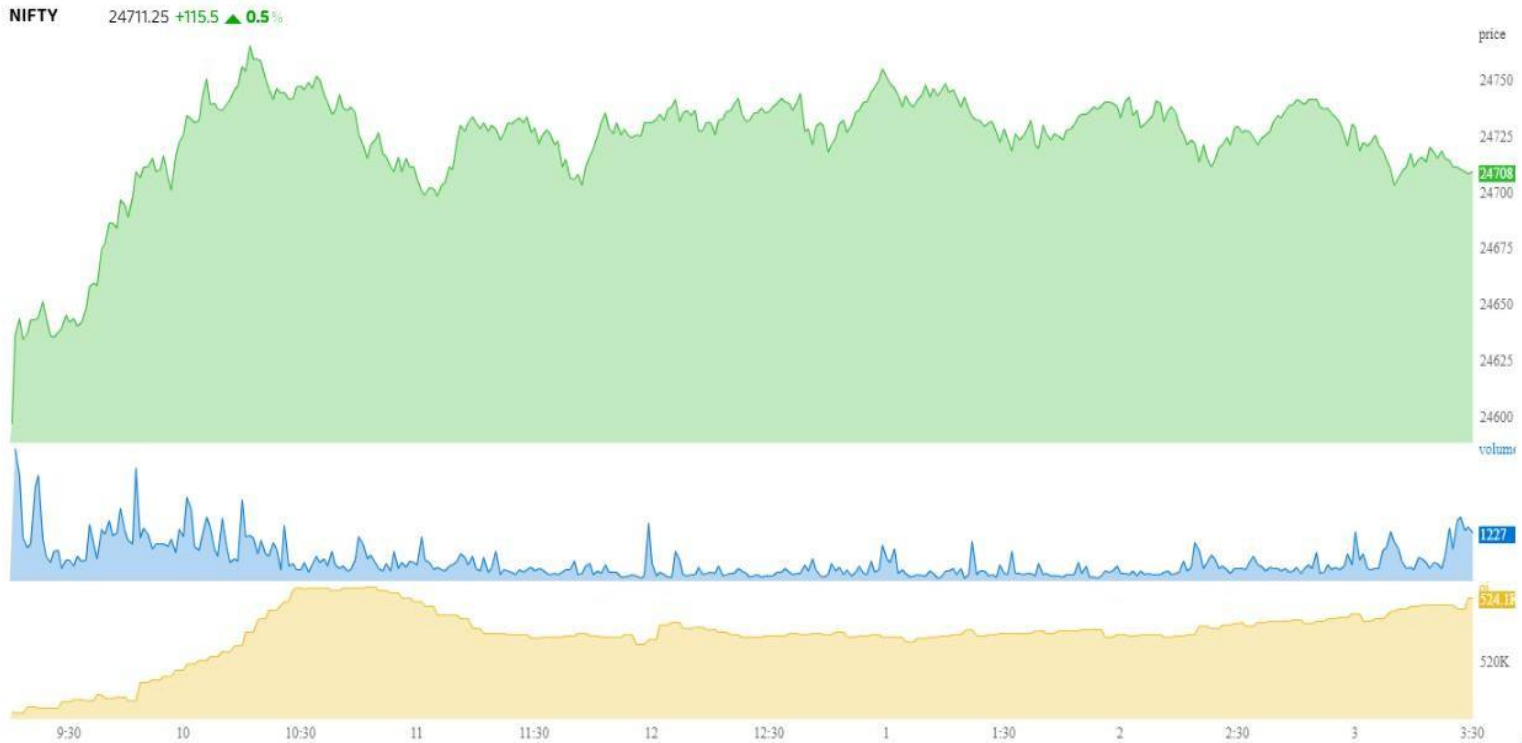


DERIVATIVE REPORT



Derivative Report

Nifty moving towards 25000 marks



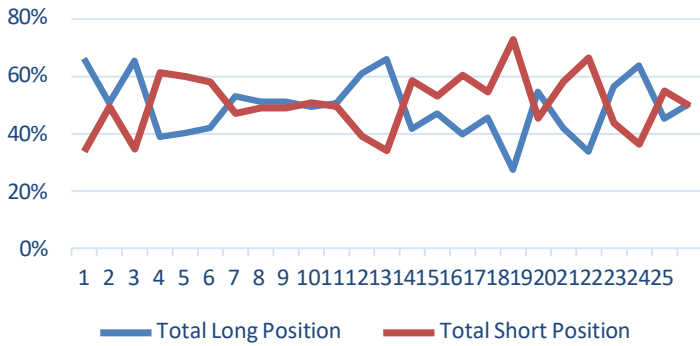
- The Nifty Index traded above the 24,700 level but failed to close above it, resulting in profit booking during the final hour of the day.
- The index is forming higher highs (HH) and higher lows (HL) on the daily timeframe, indicating an uptrend.
- Foreign Institutional Investors (FIIs) are neutral on the Nifty Index, holding a balanced position with 50% long and 50% short.
- The highest open interest (OI) at the 24,800 level will act as resistance for the current week, while support is expected at 24,400.
- The market is anticipated to trade near the 24,800 level as long as it remains above 24,600.
- If the Nifty manages to trade above 24,800, it could potentially move towards the 25,000 levels.

	SUPPORT	RESISTANCE		PRICE	OI
NIFTY 50	24600/24400	24800/25000	Near	24711.25	10772675
			Next	24841.15	1697150
			Far	24964.2	397825
	ADVANCE	DECLINE	AD RATIO		
NIFTY	38	12	3.16		
NIFTY F&O	138	47	2.93		

Derivative Report

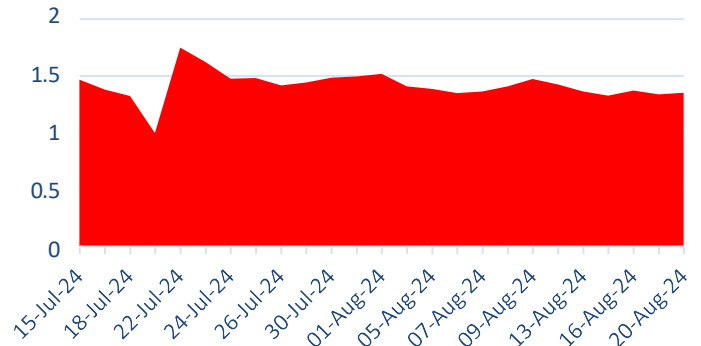


FII's Nifty Contract



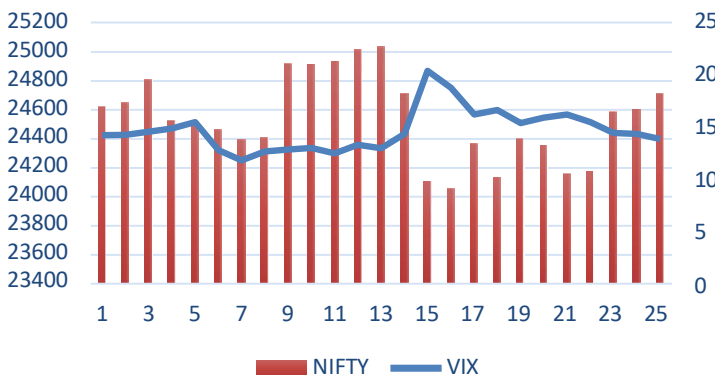
FII's are currently holding 50% long and 50% short contract in Nifty Index.

PCR



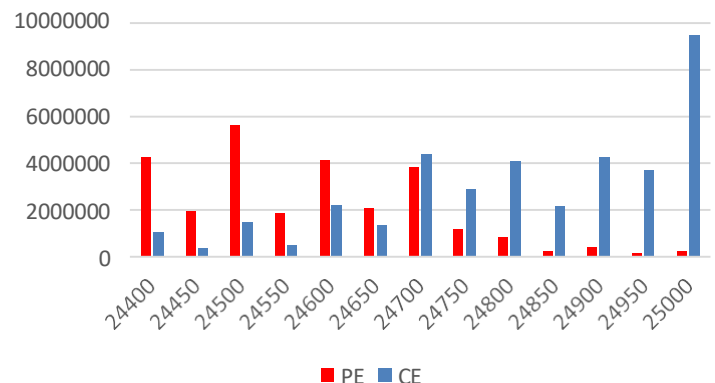
The Nifty monthly Put-Call Ratio (PCR) is currently at 1.35, up from 1.33, indicating that call writers are increasing their short positions. Meanwhile, the weekly PCR is at 1.13, suggesting a tug-of-war between call and put writers.

Nifty & India Vix



In yesterday's trading session, the VIX decreased by approximately 3.46%, signaling a reduction in volatility. It is expected that the VIX will trade within a range of 11 to 18 over the coming days.

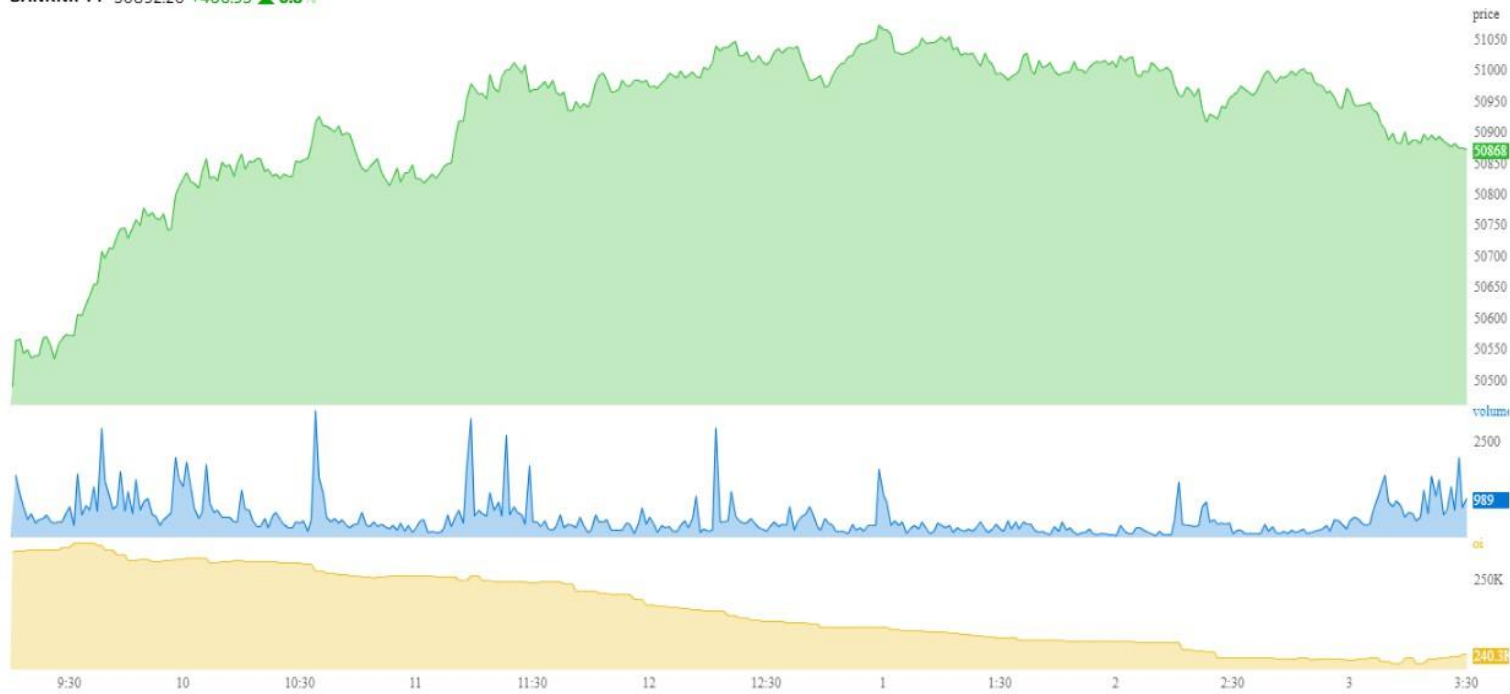
Nifty Daily OI



The highest open interest (OI) on the call side is at the 25,000 strike price, with substantial OI also at the 24,900 strike price. These levels are expected to act as strong resistance in today's trading session. On the put side, the 24,500 strike price, followed by the 24,400 strike price, has the highest OI and is likely to serve as significant support for today's session.

Banking Index hovering towards 51000 marks

BANKNIFTY 50892.20 +406.95 ▲ 0.8%

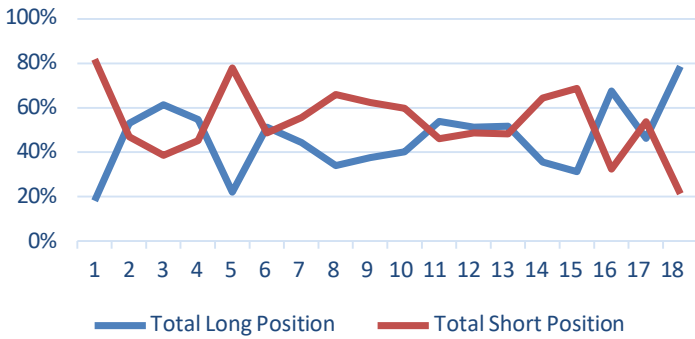


- The Bank Nifty is forming higher highs (HH) and higher lows (HL) on the daily timeframe, indicating a bullish trend in the index.
- Foreign Institutional Investors (FIIs) have increased their long positions in the banking index by 79%, marking the first significant buying of this magnitude in the August series.
- The weekly Put-Call Ratio (PCR) of 1 suggests a balance between call and put participants. On the options front, the highest open interest (OI) is observed at the 51,000 call option, where a short buildup is forming, indicating resistance.
- Conversely, at the 50,500 put option, fresh short positions are emerging, suggesting support. A weekly expiry below the 51,000 level is anticipated.

	SUPPORT	RESISTANCE		PRICE	OI
BNF	50500/50200	51000/51250	Near	50892.2	2772450
	ADVANCE	DECLINE	Next	51206.05	638100
BNF	12	0	Far	51489.35	85485

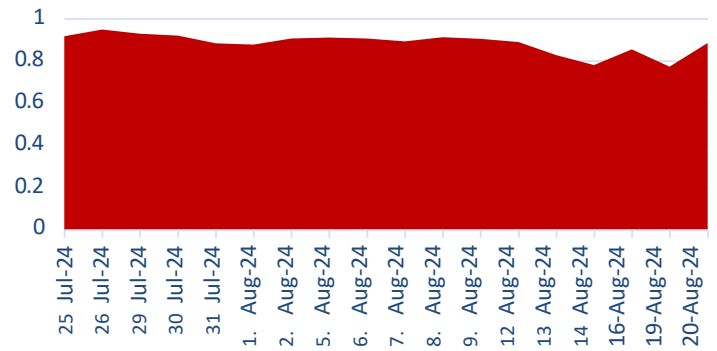
Derivative Report

BNF Contracts



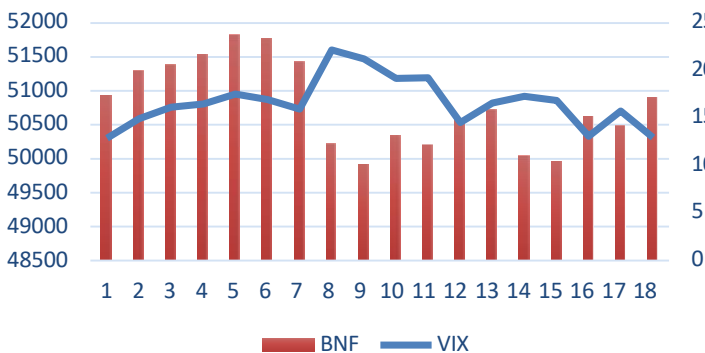
The current contracts held by Foreign Institutional Investors (FIIs) in the Banking Index reveal substantial long-side involvement. At present, 79% of the contracts are long, while 21% are short.

PCR



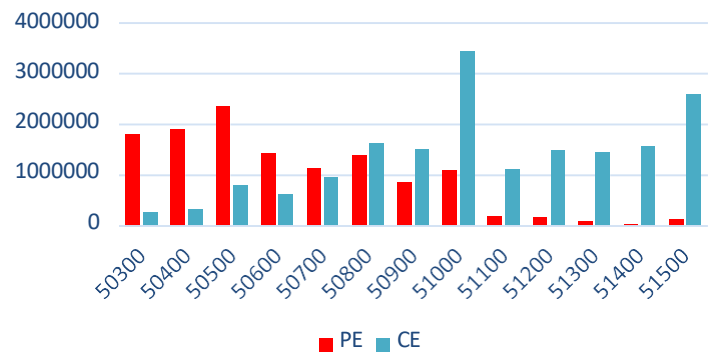
The Put-Call Ratio (PCR) for the Bank Nifty is currently 0.89, reflecting a rise in put writing. Additionally, the weekly PCR is at 1.02, indicating a tug of war between CE and PE participants.

BNF VIX



The Bank Nifty VIX is currently at 12.9. With this level of volatility, a one standard deviation move implies a potential price change of approximately $\pm 0.81\%$ for the Bank Nifty.

BNF Daily Option



The highest open interest (OI) is observed at the 51,000 call (CE) strike, likely indicating a strong resistance level in the market. Conversely, the 50,000 put (PE) strike has the highest OI on the put side, suggesting it will likely act as support.

Derivative Report



Participant wise Future Index

Participant	Long	Short	Ratio
Client	363843	327975	1.109361994
DII	81263	147489	0.550976683
FII	283734	257500	1.101879612
Pro	72675	68551	1.060159589

Participant wise Future Stock OI

Participant	Long	Short	Ratio
Clients	2263041	329357	6.8710882
DII	190174	3116749	0.0610168
FII	2396442	1774784	1.3502725
Pro	678956	307723	2.2063869

Long Build-up

Symbol	Price	Price (Chng %)	OI (Chng %)
ICICIPRULI	745.5	3.46%	13.91%
NATIONALUM	172.45	0.30%	11.41%
COFORGE	6136.25	0.92%	8.04%
TRENT	6794.2	1.31%	7.61%
HINDPETRO	397.6	2.30%	6.39%

Short Build-up

Symbol	Price	Price (Chng %)	OI (Chng %)
UBL	1942.45	-1.63%	9.56%
PVRINOX	1508.9	-1.01%	7.14%
BHARTIARTL	1452.95	-1.41%	5.55%
GUJGASLTD	589.85	-0.47%	4.31%
CIPLA	1567	-0.76%	4.21%

Short Covering

Symbol	Price	Price (Chng %)	OI (Chng %)
BALRAMCHIN	568.2	6.56%	-17.82%
MOTHERSON	189.34	1.42%	-6.37%
INDIAMART	2906.1	3.29%	-5.09%
BALKRISIND	2837.25	1.18%	-4.97%
HINDALCO	672.65	2.09%	-4.62%

Long unwinding

Symbol	Price	Price (Chng %)	OI (Chng %)
BSOFT	614.85	-1.69%	-5.82%
HINDCOPPER	319	-1.79%	-4.72%
AARTIIND	620.7	-0.11%	-2.64%
PIIND	4326.1	-0.11%	-1.66%
SUNTV	789.1	-2.33%	-0.95%

Security In Ban

AARTIIND	BALRAMCHIN	ABFRL	HINDCOPPER	BANDHANBNK	BSOFT	CHAMBLFERT	GRANULES
INDIACEM	INDIAMART	LICHSGFIN	MANAPPURAM	PNB	RBLBANK	SAIL	SUNTV
GNFC	NATIONALUM	PEL					

Derivative Report



Sr. Technical Equity Research Analyst Mr. Kunal Kamble

Disclosure: M/s. Bonanza Portfolio Ltd here by declares that views expressed in this report accurately reflect view point with subject to companies/securities. M/s. Bonanza Portfolio Ltd has taken reasonable care to achieve and maintain independence and objectivity in making any recommendations. The Analysts engaged in preparation of this Report or his/her relative: - (a) do not have any financial interests in the subject company mentioned in this Report; (b) do not own 1% or more of the equity securities of the subject company mentioned in the report as of the last day of the month preceding the publication of the research report; (c) do not have any material conflict of interest at the time of publication of the Report. The Analysts engaged in preparation of this Report:- (a) have not received any compensation from the subject company in the past twelve months; (b) have not managed or co-managed public offering of securities for the subject company in the past twelve months; (c) have not received any compensation for investment banking or merchant banking or brokerage services from the subject company in the past twelve months; (d) have not received any compensation for products or services other than investment banking or merchant banking or brokerage services from the subject company in the past twelve months; (e) has not received any compensation or other benefits from the subject company or third party in connection with the Report; (f) has not served as an officer, director or employee of the subject company; (g) is not engaged in market making activity for the subject company. M/s. Bonanza Portfolio Ltd is a registered Research Analyst under the regulation of SEBI, the year 2014. The Regn No. INH100001666 and research analyst engaged in preparing reports is qualified as per the regulation's provision.

Disclaimer: This research report has been published by M/s. Bonanza portfolio Ltd and is meant solely for use by the recipient and is not for circulation. This document is for information purposes only and information / opinions / views are not meant to serve as a professional investment guide for the readers. Reasonable care has been taken to ensure that information given at the time believed to be fair and correct and opinions based thereupon are reasonable, due to the nature of research it cannot be warranted or represented that it is accurate or complete and it should not be relied upon as such. If this report is inadvertently send or has reached to any individual, same may be ignored and brought to the attention of the sender. Preparation of this research report does not constitute a personal recommendation or take into account the particular investment objectives, financial situations, or needs of individual clients. Past performance is not a guide for future performance. This Report has been prepared on the basis of publicly available information, internally developed data and other sources believed by Bonanza portfolio Ltd to be reliable. This report should not be taken as the only base for any market transaction; however this data is representation of one of the support document among other market risk criterion. The market participant can have an idea of risk involved to use this information as the only source for any market related activity. The distribution of this report in definite jurisdictions may be restricted by law, and persons in whose custody this report comes, should observe, any such restrictions. The revelation of interest statements integrated in this analysis are provided exclusively to improve & enhance the transparency and should not be treated as endorsement of the views expressed in the analysis. The price and value of the investments referred to in this report and the income from them may go down as well as up. Bonanza portfolio Ltd or its directors, employees, affiliates or representatives do not assume any responsibility for, or warrant the accuracy, completeness, adequacy and reliability of such information / opinions / views.

While due care has been taken to ensure that the disclosures and opinions given are fair and reasonable, none of the directors, employees, affiliates or representatives of M/s. Bonanza portfolio Ltd shall be liable. Research report may differ between M/s. Bonanza portfolio Ltd RAs and other companies on account of differences in, personal judgment and difference in time horizons for which recommendations are made. Research entity has not been engaged in market making activity for the subject company. Research analyst has not served as an officer, director or employee of the subject company. Research analyst has not received any compensation/benefits from the Subject Company or third party in connection with the research report.

M/s. Bonanza Portfolio Ltd at Bonanza House, Plot No. M-2, Cama Industrial Estate. Walbhat Road, Goregaon (E), Mumbai – 400063
Web site: <https://www.bonanzaonline.com>
Research Analyst Regn No. INH100001666 SEBI Regn. No.: INZ000212137